



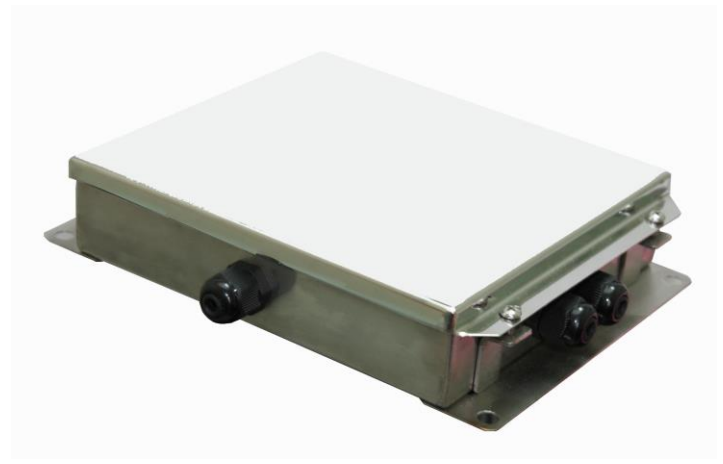
**DJB** Digital Junction Box converts signal from Analogue/Digital load cells into digital ones, then further process these digital signals into meaningful readings like weight and totalized AD counts according to predefined parameters given to it. Samples of these parameters are capacity, division, decimal place, filter, auto zero tracking speed, weight units ... etc.

Eccentric adjustment of multi load cells installation becomes easy with **DJB**.

**DJB** calculates and compensates automatically the span gain of each individual load cell channel. Manual eccentric adjustment and span gain are also supported by **DJB**.

Each load cell channel is supported by an independent 24 bit  $\Sigma$ - $\Delta$ - Analog-to-Digital Converter, special linearity compensation method plus all other state-of-the-art technologies applied, all these together enable **DJB** to provide fast, stable and almost error-free weighing result at anytime and anywhere.

Driver software is available to make setup nothing more than mouse clicks, selections on screen and numeric entries by finger tips.



***Versatility, Functionality and Accuracy are always Built-in***

# DJB Series Digital Junction Boxes

## Metrology Functions

- Individual Load Cell Channel On/Off
- Automatic and manual Eccentric and Span adjustment
- Independent Zero Calibration
- Single point or dual point calibration
- Odd Weight Calibration
- Free Capacity and Division Setting
- Linearity Compensation ON or OFF
- 8 x Initial Zero Range
- 6 x Manual Zero Range
- 9 x Auto Zero Tracking Range
- 6 x Stable Definitions

## Operation Functions

- Weight Reading
- Totalized or Individual AD Value Reading
- Manual Tare
- Manual Zero

## Other Selectable Parameters

- 3 x Filter Intensity Mode
- 6 x Data Output Baud Rate
- 2 x Weight Units
- Transmission by RS232 or RS485

## Specifications

Model No.	DJB-4SS	DJB-6SS
No. of Load Cell Channels	4	6
Enclosure	Stainless Steel Housing with Sealing Devices	
AD Converter	1 x 24 bit $\Sigma$ - $\Delta$ Converter/Channel	
Weight Units	Metric (kg) and Imperial (lb)	
A/D Sampling Speed	15 times/ second	
Max. Measuring Range	15 mV / Channel	
Tare Range	- Max (Subtractive Tare)	
Power Voltage Requirements	External Power = 9~ 12V DC, 800mA	
Load Cell Excitation Voltage	5 VDC/Channel	
Min Load Cell Impedance	350 $\Omega$ /Channel	
Max Load Cell Impedance	1000 $\Omega$ /Channel	
Load Cell Connection	Supports 4-wire	
Dimensions	220 x 200 x 45mm	
Operation Environment	-10 ~ 40°C. Non-condensed. R.H. $\leq$ 85%	

*In the interest of improvement, specifications may change prior to notice*

## Options

- RD-DOT Dot Matrix Remote Display to show Weighing Results and to send Operation & Setting Commands
- WM-SP Wireless Data Communication Module for Wireless Transmission



Fidelity Measurement Co., Ltd.  
<http://www.fi-measurement.com>  
e-mail: [info@fi-measurement.com](mailto:info@fi-measurement.com)

REV.: DJB/18/01/03