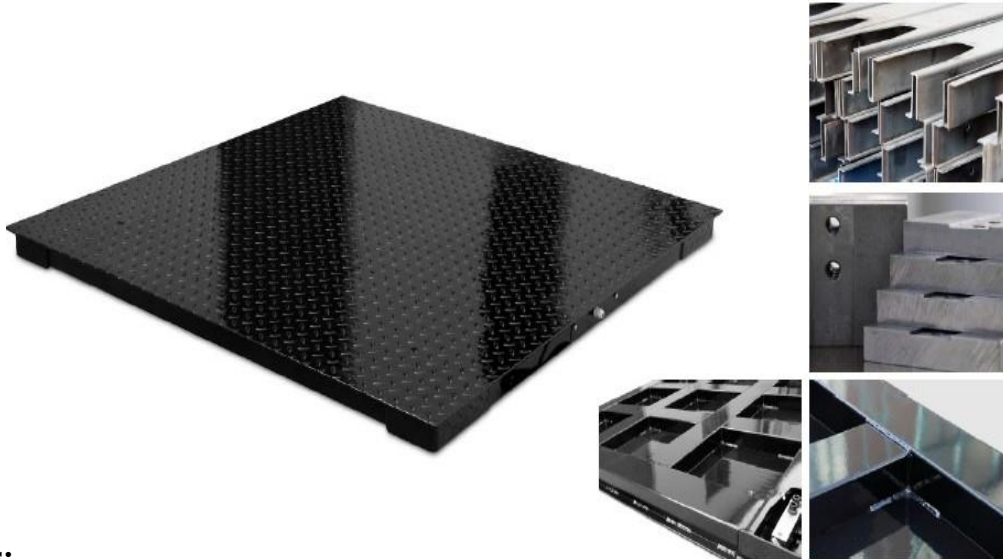


**XSB** is designed & built to meet a wide range of heavy traffic & high resolution industrial applications up to 6000kg.

It delivers un-exceptional reliability, accuracy and skin smooth performance to meet weighing, batching and counting needs.



### Specifications:

Model No	Platform Size (mm)		Load Cell		
XSB-0808 (A, N)	800 x 800		Type: - • A: - OIML / NTEP C3 approved • N: - FM Special Grade Assignment: 4 x 500kg for Max = 1T • 4 x 1000kg for Max = 2T • 4 x 1500kg for Max = 3T • 4 x 2000kg for Max = 5T • 4 x 3000kg for Max = 6T		
XSB-0810 (A, N)	800 x 1000				
XSB-1010 (A, N)	1000 x 1000				
XSB-1012 (A, N)	1000 x 1200				
XSB-1212 (A, N)	1200 x 1200				
XSB-1215 (A, N)	1200 x 1500				
XSB-1515 (A, N)	1500 x 1500				
XSB-1520 (A, N)	1500 x 2000				
XSB-2020 (A, N)	2000 x 2000				
Nominal Capacity (Max)	1T	2T	5T	6T	
Adjusted Eccentric Accuracy (kg)	0.05	0.1	0.2	0.5	0.5

### Quality, Structural Strength & Accuracy are Safeguarded by:

- Material Grade
- Material Thickness
- Tooling & Method used to handle Material Cutting, Blending ... etc.
- Smart & CNC Made Oversized Heavy Duty Load Cell Supporting & Mounting Blocks
- Strict Construction Accuracy Standards Applied
- Smart & High-Quality Stainless Steel Junction Box used.
- OIML / NTEP C3 Approved or FM Special Grade Load Cell
- High-Density Channel Frame Allocation
- High-Quality Epoxy Coating

### Key Features:

- Extremely Rigid Structural Steel Channel Frame Specifically Designed for Heavy Traffic
- Super Strong Channel Frame Provides Extra Protection by Enclosing the Load Cells, Cable, and Junction Box Inside and away from Chemicals and Other Industrial Elements
- Heavy-Duty Industrial design Threaded Eyebolt Holes for Easy Lifting
- Top-of-Floor or In-Floor Mounting
- Swivel Adjustable Feet Eliminate Weighing Errors due to Misalignment
- Construction Accuracy: - Better than 0.25%



**Global Asia Trading Company**  
 Local agent of Fidelity Measurement Co. Ltd.,  
 Website : [www.gatcobd.com](http://www.gatcobd.com)  
 E-Mail : [info@gatcobd.com](mailto:info@gatcobd.com)  
 Contact : +88 01711 531 809